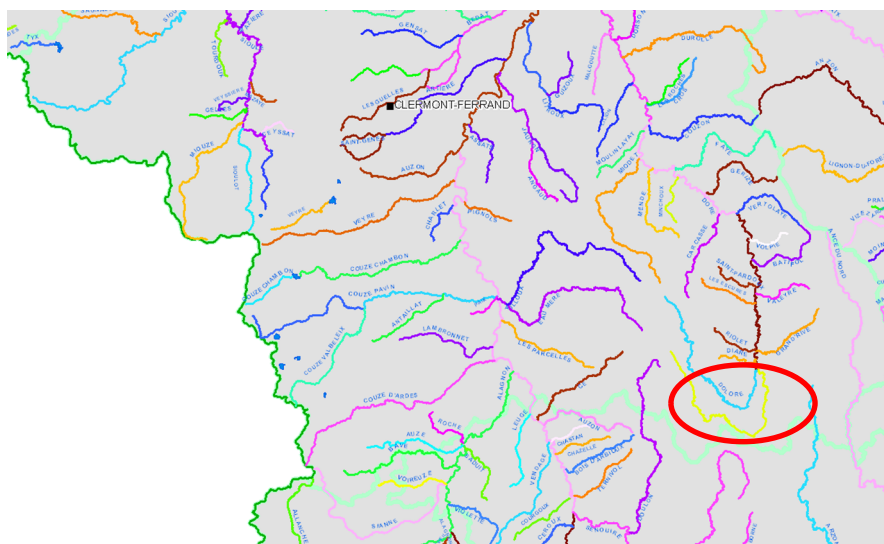




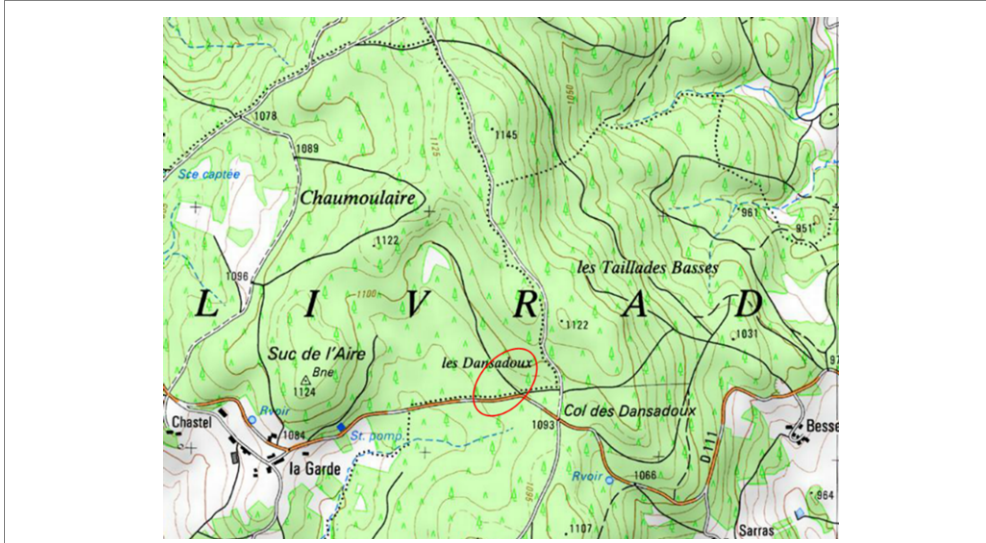
http://carto.data.gouv.fr/1/ddt63_projet_carto_coursdeau.map



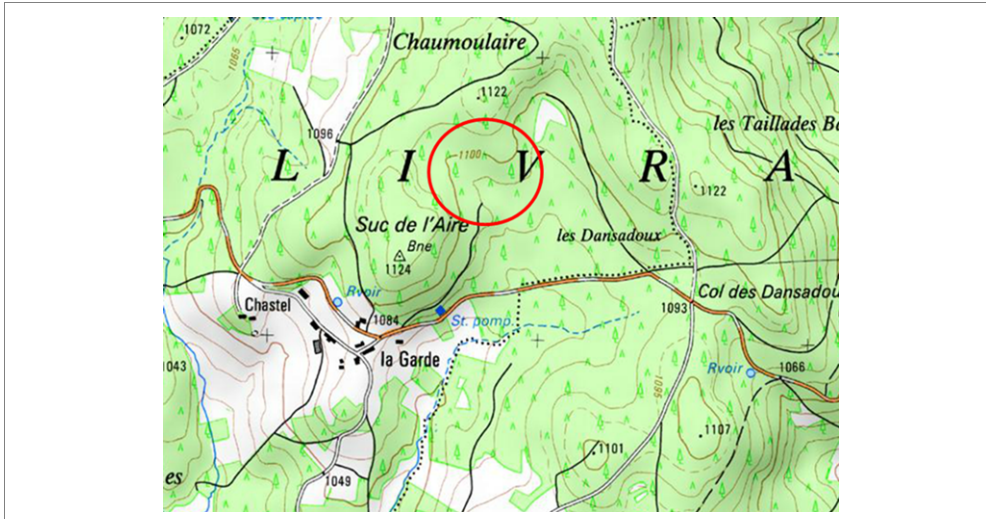
Source : www.eau-loire-bretagne.f

6.1.2.1 Localisation des captages au regard des masses d'eau superficielles

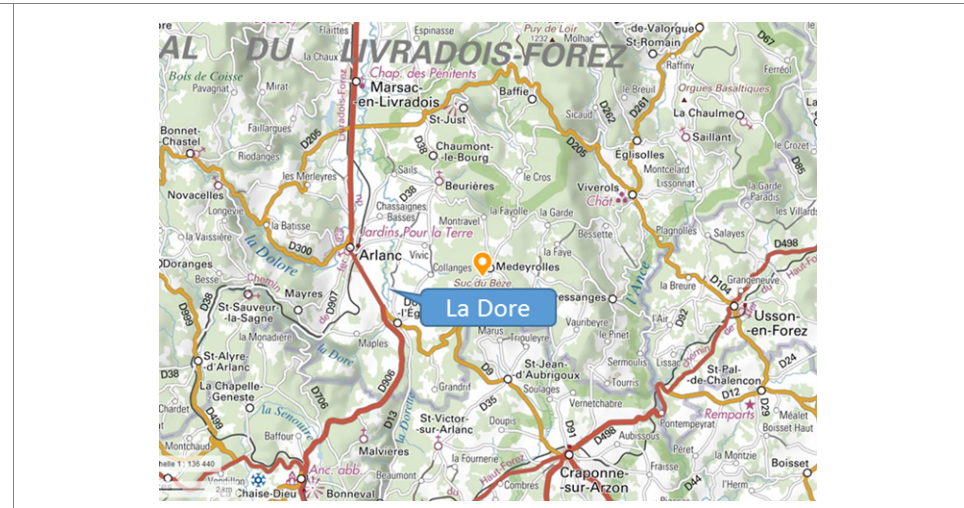
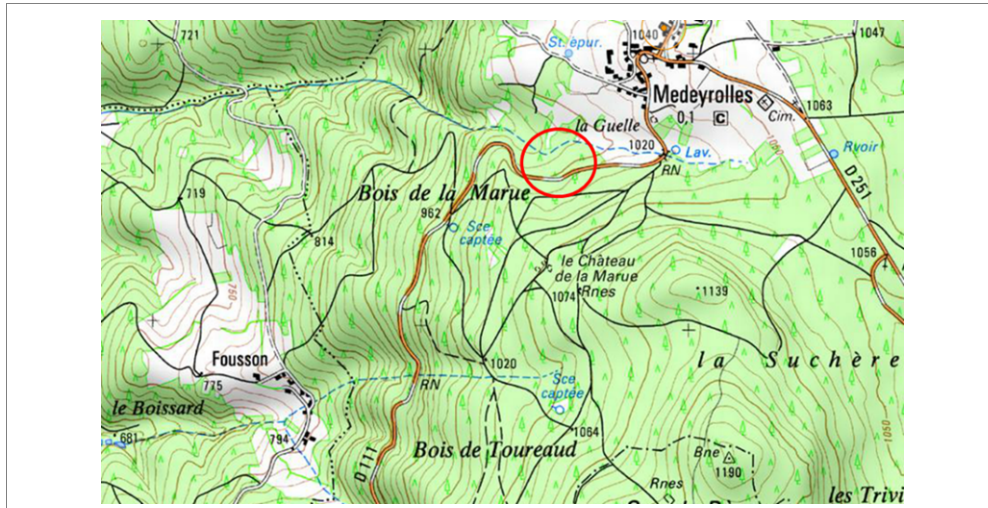
Captage Dansadoux



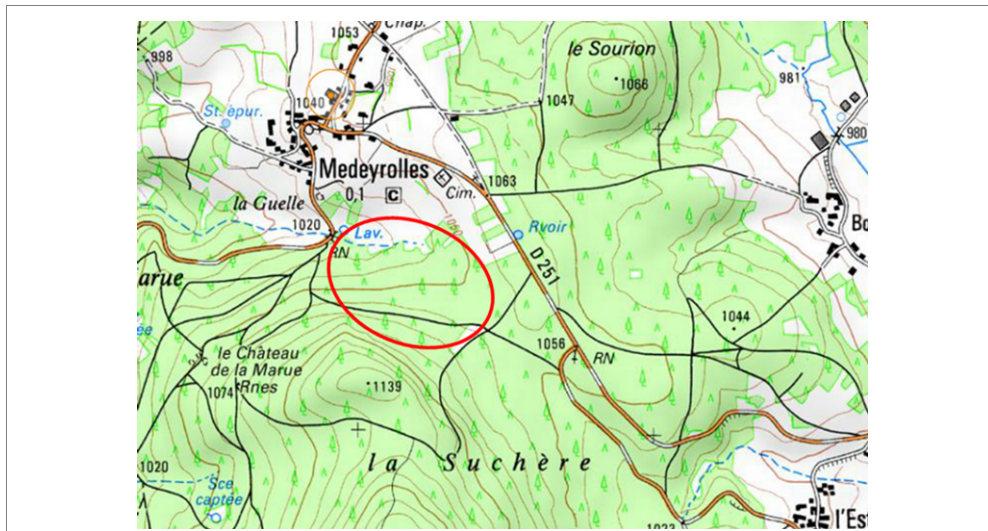
Captage de La Garde



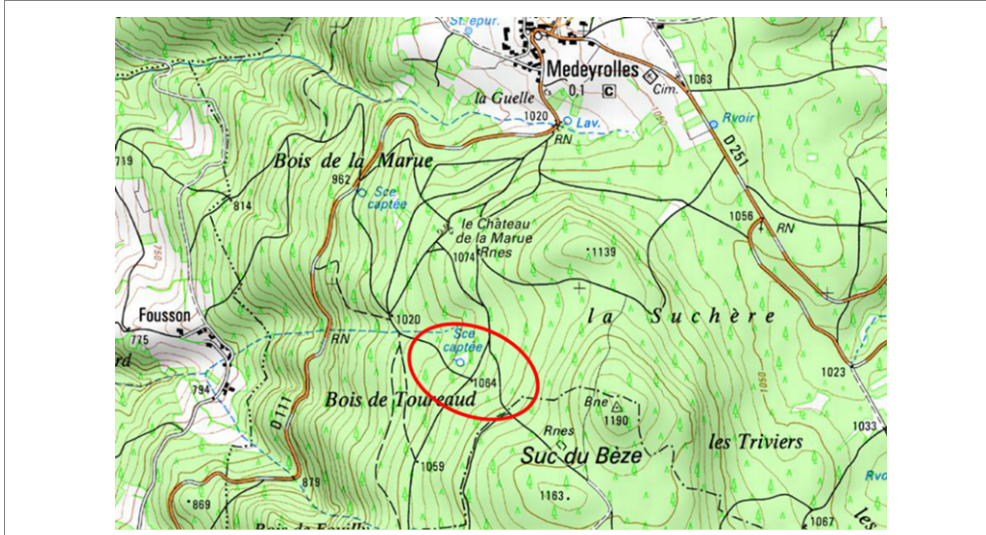
Captage Sous les Fayards



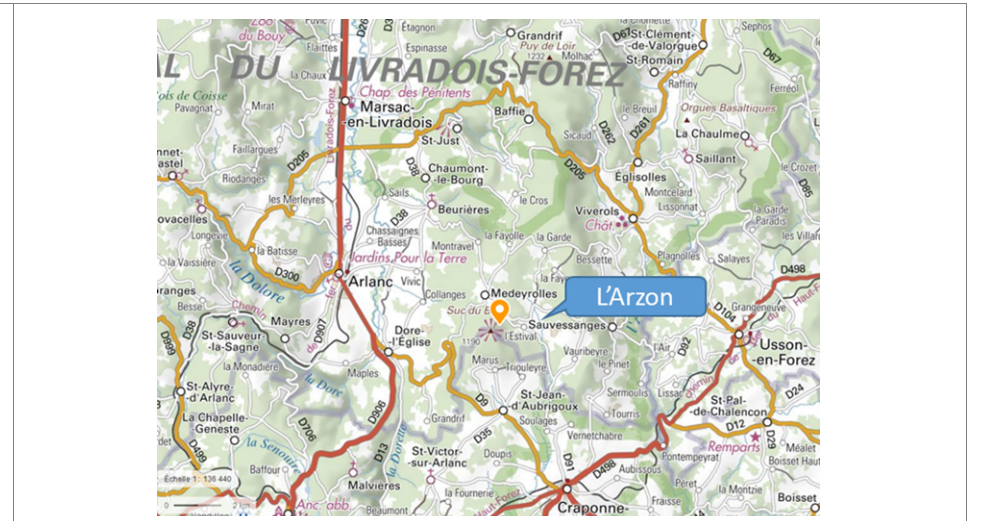
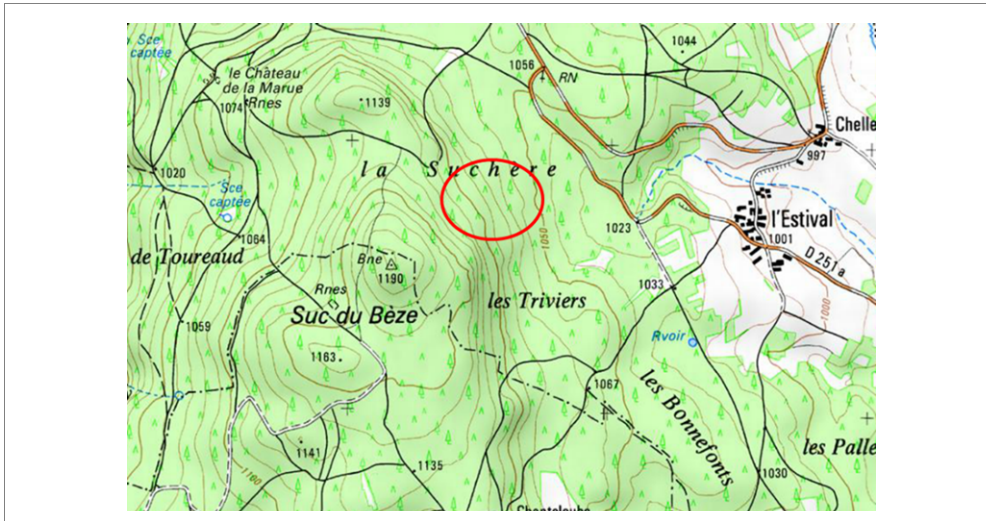
Captage du Lavoir



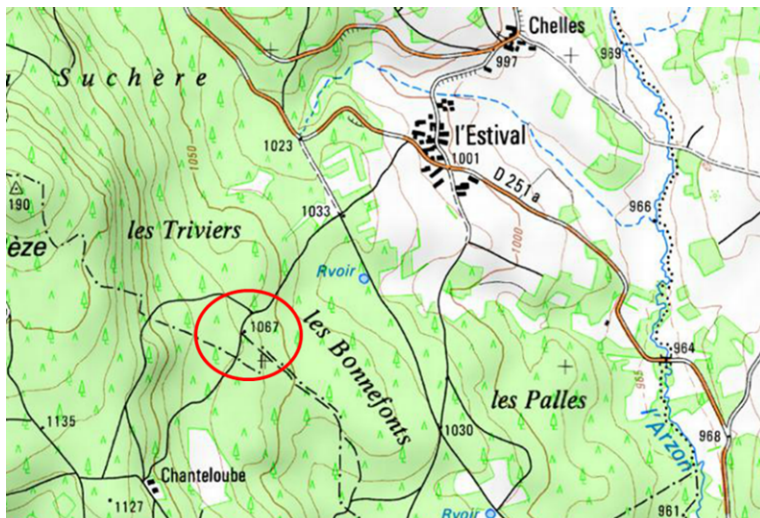
Captage de La Marue



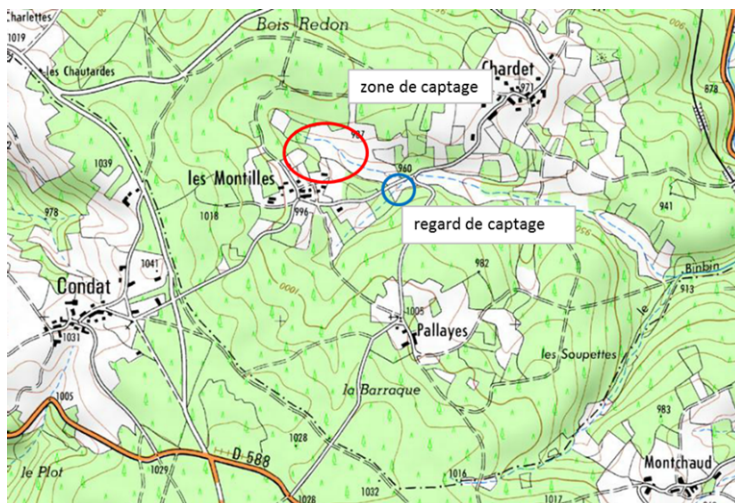
Captage de Jouvot



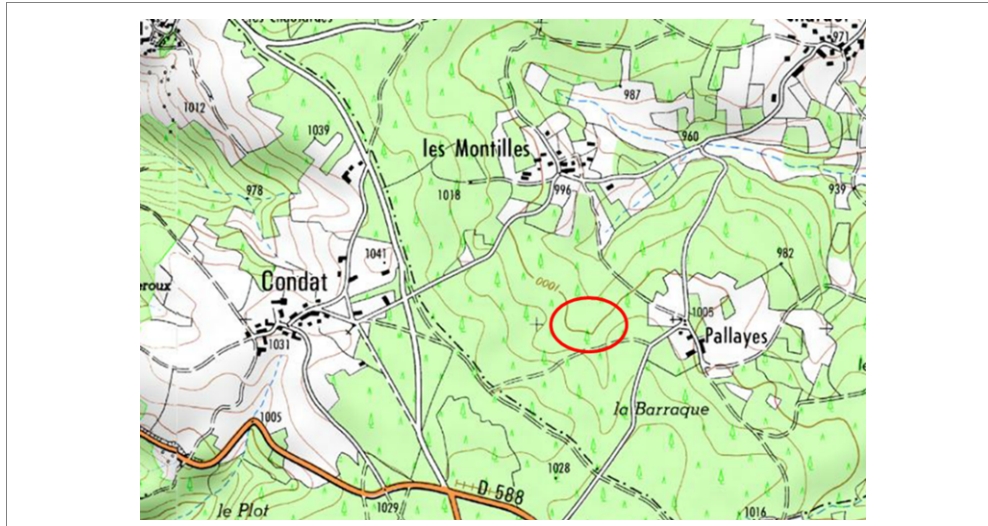
Captage de l'Estival



Captage des Montilles



Captage de Pallayes Ouest



Captage de Pallayes Est

